



SHENZHEN PKCELL BATTERY CO.,LTD

Address : 4th Building,Meitai Technology Park,Guanguang Road,Longhua,
Shenzhen,China.518110

Tel: +86 755 86670672

Fax: +86 755 86670609

Website: www.batterypkcell.com

E-mail: info@batterypkcell.com



Li-ion Battery & Li-Polymer Battery

Solution provider for customized application of battery and power.

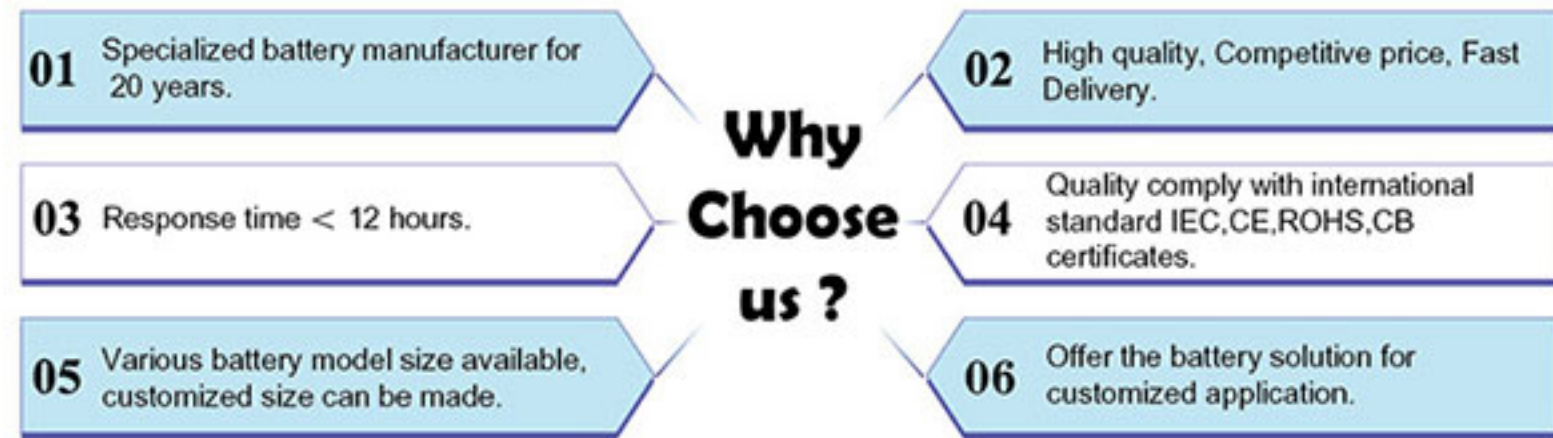
SHENZHEN PKCELL BATTERY CO.,LTD
www.batterypkcell.com



ABOUT US

Shenzhen Pkcell Battery Co. Ltd is one of the largest battery manufacturing enterprises in China for its biggest production scale, most advanced equipments and fullest ranged product varieties. The workshop and office are set up in four huge buildings with total gross floor area of 28,000 square meters. Pkcell has about 400 staff including 30 professional technicians and 50 quality management personnel. Equipped with about 18 sets high speed automatic production lines and quality inspection equipment. Our annual battery output is up to 500 billion pieces.

We mainly produce Lithium Polymer battery, Lithium ion battery and Lithium battery pack, Li-FePO4 battery, Ni-MH/Ni-Cd rechargeable battery, Ni-Zn rechargeable battery and Charger. Those products are widely used in the industry of telecommunication, digital products, GPS tracker, E-cigarette, Cash Register, POS Terminal, Barcode scanner, Taxi-machine, Portable Voting Device, Lighting Device, Emergency Light, Fire Alarm Sensors, Mine equipment, Medical instruments etc.

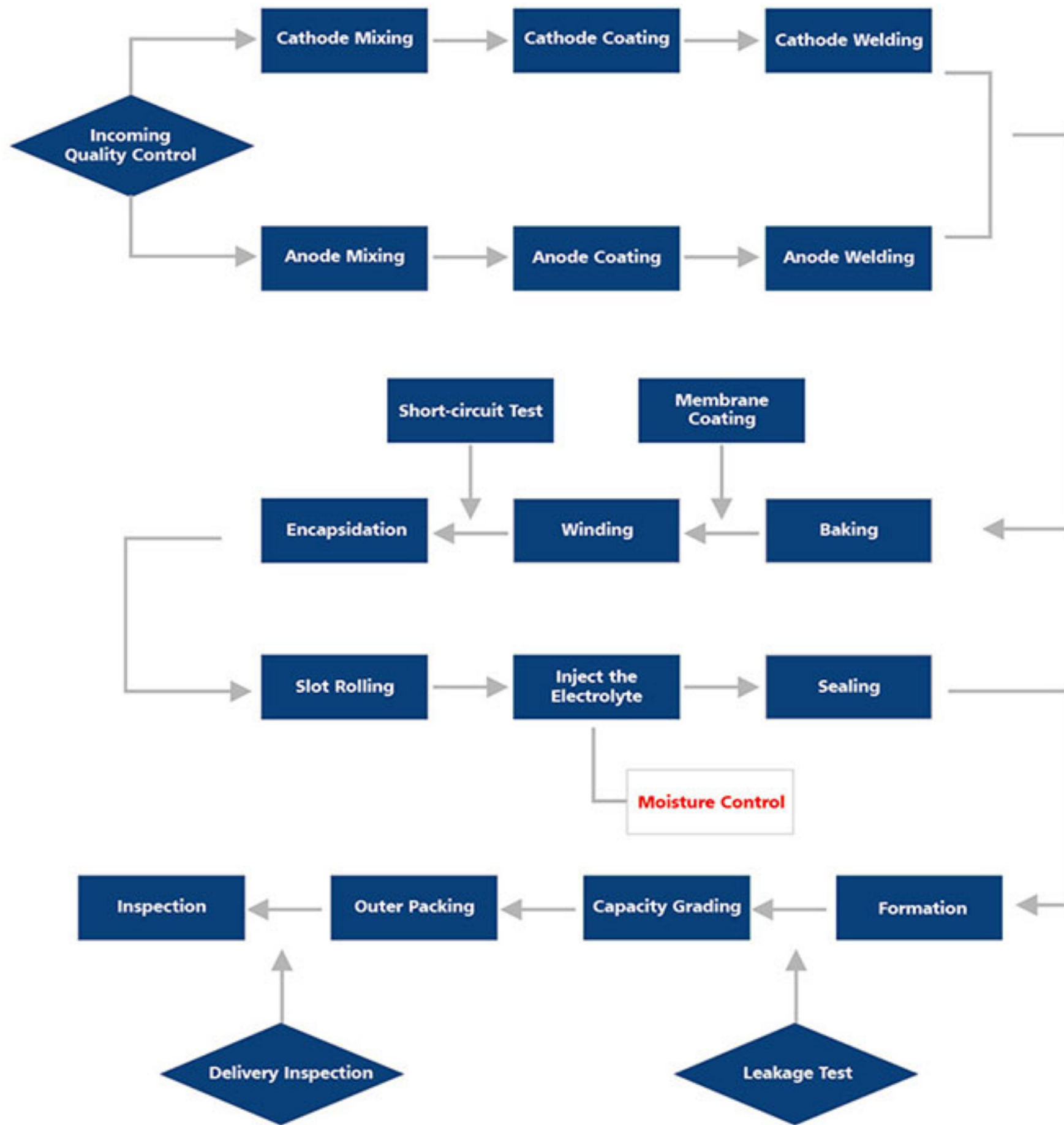


Contents

- Production Process** ----- 1
- Lithium Rechargeable Battery Cell** ----- 2
 - Lithium Polymer Battery Cell
 - Cylindrical Lithium ion Battery
 - Cylindrical Li-FePO4 Battery
- Application For Lithium Rechargeable Battery/Battery Pack** ----- 9
 - Application For Lithium Polymer Battery/Battery Pack
 - Application For Lithium ion Battery/Battery Pack
- Characteristics Of Lithium Battery** ----- 11
- USB Charger For Lithium ion Battery** ----- 12



Production Process



Lithium Rechargeable Battery Cell

>Lithium Polymer Battery Cell



NO.	Model	Capacity(mAh)	Nominal Voltage(V)	Inner Resistance (mΩ)	Thickness (mm)	Width(mm)	Height(mm)
1	102535	800	3.7	< 70	10.0	25.0	35.5
2	102540	1100	3.7	< 60	10.0	25.0	40.5
3	103030	800	3.7	< 70	10.0	30.2	30.5
4	103030	900	3.7	< 70	10.0	30.2	30.5
5	103033	900	3.7	< 60	10.0	30.0	33.0
6	103035	1000	3.7	< 60	10.2	30.0	35.0
7	103035	950	3.7	< 60	10.0	30.0	35.0
8	103035	1050	3.7	< 60	10.0	30.0	35.0
9	103040	1200	3.7	< 60	10.0	30.5	40.0
10	103048	1500	3.7	< 60	10.0	30.0	48.0
11	103443	1600	3.7	< 60	10.0	34.0	43.0
12	103450	1700	3.7	< 60	10.0	34.5	50.5
13	103450	1800	3.7	< 60	10.0	34.5	50.5
14	103450	2000	3.7	< 60	10.0	34.5	50.5
15	103740	1600	3.7	< 60	10.0	37.0	40.0
16	104050	2200	3.7	< 60	10.0	40.0	50.5
17	112740	1150	3.7	< 60	10.5	27.0	40.0
18	114250	2500	3.7	< 50	11.0	42.0	50.5
19	294141	450	3.7	< 80	2.9	41.0	41.0
20	301730	110	3.7	< 200	3.0	17.0	30.0
21	303040	320	3.7	< 140	3.1	30.0	40.0
22	303450	500	3.7	< 80	3.0	34.0	50.0
23	303556	600	3.7	< 90	3.0	35.0	56.0
24	313973	950	3.7	< 70	3.1	39.0	72.0
25	352425	160	3.7	< 170	3.5	24.0	25.0
26	351760	300	3.7	< 100	3.5	17.0	60.0
27	401525	110	3.7	< 220	4.0	15.0	25.0
28	401540	190	3.7	< 150	4.0	15.0	40.0
29	402227	210	3.7	< 150	4.1	22.5	27.0
30	403035	400	3.7	< 100	4.2	30.5	35.0
31	403040	420	3.7	< 100	4.0	30.0	40.0
32	404085	1500	3.7	< 60	4.0	40.0	85.0
33	424837	780	3.7	< 80	4.5	48.0	37.0
34	452535	350	3.7	< 100	4.5	25.0	35.0
35	453450	680	3.7	< 80	4.6	34.0	50.0
36	453535	350	3.7	< 80	4.5	35.0	35.0
37	453535	500	3.7	< 90	4.5	35.0	35.0
38	453640	700	3.7	< 80	4.5	36.0	40.5
39	453656	950	3.7	< 70	4.5	36.0	56.0
40	454253	950	3.7	< 60	4.5	42.0	53.0
41	463960	1200	3.7	< 60	4.6	39.0	60.0
42	464065	1300	3.7	< 60	4.6	40.0	65.0
43	473443	680	3.7	< 70	4.7	34.0	43.0
44	501765	550	3.7	< 80	5.0	17.0	65.0
45	501988	900	3.7	< 80	5.0	19.0	88.0
46	502023	180	3.7	< 180	5.0	20.0	23.0
47	502547	600	3.7	< 70	5.0	25.0	47.0
48	503035	450	3.7	< 80	5.0	30.0	35.0
49	503040	600	3.7	< 80	5.0	30.0	40.0
50	503670	1500	3.7	< 60	5.0	36.0	70.0
51	503759	1200	3.7	< 60	5.0	37.0	59.0
52	503838	700	3.7	< 60	5.0	38.0	38.0
53	504043	850	3.7	< 80	5.0	40.0	43.0
54	504253	1200	3.7	< 60	5.0	42.0	53.0
55	504452	1300	3.7	< 60	5.0	44.0	52.0
56	505080	2000	3.7	< 50	5.0	50.0	80.0
57	506085	3000	3.7	< 50	5.0	60.0	85.0
58	553450	1000	3.7	< 60	5.5	34.0	50.0
59	542850	750	3.7	< 80	5.4	28.0	50.0
60	552248	600	3.7	< 80	5.7	22.0	48.0
61	552530	350	3.7	< 120	5.5	25.0	30.0
62	552530	380	3.7	< 120	5.5	25.0	30.0
63	552535	400	3.7	< 100	5.5	25.0	35.0
64	552535	450	3.7	< 90	5.6	25.0	35.0
65	552566	1000	3.7	< 60	5.8	25.0	66.0
66	553030	500	3.7	< 80	5.5	30.0	30.0
67	554050	1250	3.7	< 60	5.6	40.0	50.0
68	555368	2500	3.7	< 50	5.5	53.0	68.0
69	562425	300	3.7	< 130	5.6	24.5	25.5
70	573040	650	3.7	< 60	5.7	30.0	40.0
71	582728	360	3.7	< 120	5.8	27.0	28.0
72	582728	400	3.7	< 120	5.8	27.0	28.0
73	582755	880	3.7	< 80	5.8	27.0	55.0
74	583136	650	3.7	< 80	5.8	31.0	36.0
75	601730	260	3.7	< 140	6.0	17.0	30.0
76	602023	210	3.7	< 150	6.0	20.0	30.0
77	602025	230	3.7	< 150	6.0	20.0	25.0
78	602030	300	3.7	< 150	6.2	20.0	30.0
79	602627	400	3.7	< 140	6.3	26.5	27.0
80	603030	350	3.7	< 100	6.0	30.0	30.0

Lithium Rechargeable Battery Cell

>Lithium Polymer Battery Cell



NO.	Model	Capacity(mAh)	Nominal Voltage(V)	Inner Resistance (mΩ)	Thickness (mm)	Width(mm)	Height(mm)
81	603030	500	3.7	< 100	6.0	30.5	30.5
82	603035	600	3.7	< 80	6.0	30.0	35.0
83	603443	900	3.7	< 80	6.0	34.0	43.0
84	603048	950	3.7	< 60	6.0	30.0	48.0
85	603450	1100	3.7	< 60	6.0	34.0	50.0
86	603540	800	3.7	< 80	6.0	35.0	40.5
87	603542	800	3.7	< 60	6.0	35.0	42.0
88	603855	1400	3.7	< 60	6.0	38.0	55.0
89	604040	1000	3.7	< 60	6.0	40.0	39.5
90	604565	2000	3.7	< 60	6.0	45.0	65.0
91	604859	1900	3.7	< 60	6.0	48.0	59.0
92	605080	3000	3.7	< 60	6.0	50.0	80.0
93	632576	1400	3.7	< 60	6.3	25.0	76.0
94	643455	1300	3.7	< 60	6.4	34.0	55.0
95	652025	250	3.7	< 150	6.9	20.5	25.5
96	652535	500	3.7	< 100	6.5	25.0	35.0
97	654658	2100	3.7	< 60	6.5	46.0	58.0
98	683438	850	3.7	< 80	6.8	34.0	38.0
99	683438	900	3.7	< 80	6.8	34.0	38.0
100	653536	850	3.7	< 60	6.5	35.0	36.0
101	683665	1800	3.7	< 60	6.8	36.0	65.0
102	684060	2000	3.7	< 60	6.8	40.0	60.0
103	702025	300	3.7	< 120	7.0	20.5	25.5
104	702038	480	3.7	< 80	7.0	20.0	38.0
105	702040	500	3.7	< 80	7.0	20.0	40.0
106	702530	450	3.7	< 100	7.0	25.0	30.0
107	703040	800	3.7	< 80	7.0	30.0	40.0
108	703048	1000	3.7	< 60	7.0	30.0	48.0
109	703443	1000	3.7	< 60	7.1	34.5	43.0
110	703450	1200	3.7	< 60	7.0	34.0	50.0
111	704060	1800	3.7	< 60	7.2	40.5	60.5
112	704250	1500	3.7	< 60	7.0	41.5	50.0
113	704565	2600	3.7	< 50	7.0	45.0	65.0
114	705368	3200	3.7	< 50	7.0	53.0	68.0
115	713063	1600	3.7	< 60	7.1	30.0	63.0
116	722924	450	3.7	< 80	7.2	29.0	24.0
117	743048	1200	3.7	< 60	7.4	30.0	48.0
118	752636	700	3.7	< 80	7.3	26.0	36.0
119	753538	1000	3.7	< 60	7.5	35.0	38.0
120	753650	1500	3.7	< 60	7.5	36.0	50.0
121	754053	1900	3.7	< 60	7.5	40.0	53.0
122	754068	2400	3.7	< 60	7.5	40.0	68.0
123	783094	2600	3.7	< 50	8.0	30.5	94.5
124	801948	750	3.7	< 80	8.0	19.0	48.0
125	802040	600	3.7	< 80	8.0	20.0	40.0
126	802045	700	3.7	< 80	8.0	20.0	40.5
127	802046	750	3.7	< 80	8.0	20.0	46.0
128	802046	800	3.7	< 80	8.0	20.3	46.5
129	802530	520	3.7	< 80	8.0	25.0	30.5
130	802540	800	3.7	< 70	8.0	25.0	40.0
131	802735	750	3.7	< 80	8.0	27.0	35.0
132	803030	650	3.7	< 80	8.0	30.5	30.5
133	803030	700	3.7	< 80	8.0	30.0	30.0
134	803035	850	3.7	< 80	8.0	30.0	35.0
135	803040	900	3.7	< 80	8.0	30.0	40.0
136	803040	1000	3.7	< 60	8.0	30.0	40.0
137	803048	1200	3.7	< 60	8.0	30.0	48.0
138	803260	1800	3.7	< 60	8.0	32.0	60.0
139	803450	1500	3.7	< 60	8.0	34.0	50.0
140	804045	1250	3.7	< 60	8.0	40.0	45.0
141	804141	1550	3.7	< 60	8.0	41.0	41.0
142	804257	2200	3.7	< 55	8.0	42.0	57.0
143	824070	2300	3.7	< 40	8.2	40.0	70.0
144	843555	1900	3.7	< 60	8.4	35.0	55.0
145	852346	960	3.7	< 70	8.5	23.0	46.0
146	852530	600	3.7	< 80	8.5	25.0	30.5
147	854048	1670	3.7	< 60	8.6	40.0	48.5
148	854250	2000	3.7	< 60	8.5	42.0	50.0
149	902030	500	3.7	< 80	9.0	20.0	30.5
150	902035	520	3.7	< 80	9.0	20.0	35.0
151	902060	1100	3.7	< 80	9.0	20.0	60.0
152	902248	950	3.7	< 70	9.0	22.0	48.0
153	902530	620	3.7	< 80	9.0	25.0	30.5
154	902642	1000	3.7	< 60	9.0	26.0	42.0
155	904040	1400	3.7	< 60	9.0	40.0	40.0
156	904265	2900	3.7	< 50	9.0	42.0	65.5
157	904850	2400	3.7	< 60	9.0	48.0	50.0
158	934346	1900	3.7	< 60	9.3	43.0	46.0
159	904353	2400	3.7	< 60	9.0	43.0	53.0
160	954040	1600	3.7	< 60	9.5	40.0	40.0

Lithium Rechargeable Battery Cell

>Lithium Polymer Battery Cell Popular Size

Model	Nominal Voltage(V)	Battery Cell Size			Capacity(mAh)	Discharge Performance
		Thickness(mm)	Width(mm)	Length(mm)		
401230	3.7	4	12	30	105	0.5C-1C
401235	3.7	4	12	35	100	0.5C-1C
551730	3.7	5.5	17	30	250	0.5C-1C
801735	3.7	8	17	35	400	0.5C-1C
801740	3.7	8	17	40	500	0.5C-1C
402025	3.7	4	20	25	150	0.5C-1C
902030	3.7	9	20	30	500	0.5C-1C
603030	3.7	6	30	30	500	0.5C-1C
402035	3.7	4	20	35	230	0.5C-1C
552035	3.7	5.5	20	35	350	0.5C-1C
503035	3.7	5	30	35	500	0.5C-1C
402535	3.7	4	25	35	330	0.5C-1C
402040	3.7	4	20	40	280	0.5C-1C
503040	3.7	5	30	40	560	0.5C-1C
503562	3.7	5	35	62	1200	0.5C-1C
803475	3.7	8	34	75	2200	0.5C-1C
674360	3.7	6.7	43	60	1950	0.5C-1C
803040	3.7	8	30	40	1000	0.5C-1C
523450	3.7	5.2	34	50	950	0.5C-1C
603450	3.7	6	34	50	1100	0.5C-1C
803450	3.7	6	34	50	1100	0.5C-1C
103450	3.7	10	34	50	2000	0.5C-1C
103450	3.7	10	34	50	1800	0.5C-1C
103448	3.7	10	34	48	1500	0.5C-1C
903759	3.7	9	37	59	2200	0.5C-1C
803860	3.7	8	38	60	2000	0.5C-1C
654860	3.7	6.5	48	60	2000	0.5C-1C
785060	3.7	7.8	50	60	2500	0.5C-1C



Lithium Rechargeable Battery Cell

>Cylindrical Lithium ion Battery (High Capacity)

Model	Nominal Voltage(V)	Dimension		Capacity(mAh)	Discharge Performance
		Diameter(mm)	Height(mm)		
ICR10150	3.7	10.3	15	80	0.5C-1C
ICR10440	3.7	10.3	44	320	0.5C-1C
ICR10840	3.7	10.3	84	600	0.5C-1C
ICR14200	3.7	14.2	20	150	0.5C-1C
ICR14280	3.7	14.2	28	320	0.5C-1C
ICR14430	3.7	14.2	43	550	0.5C-1C
ICR14430	3.7	14.2	43	600	0.5C-1C
ICR14430	3.7	14.2	43	650	0.5C-1C
ICR14500	3.7	14.2	50.2	500	0.5C-1C
ICR14500	3.7	14.2	50.2	600	0.5C-1C
ICR14500	3.7	14.2	50.2	650	0.5C-1C
ICR14500	3.7	14.2	50.2	700	0.5C-1C
ICR14500	3.7	14.2	50.2	800	0.5C-1C
ICR14650	3.7	14.2	65	1000	0.5C-1C
ICR14650	3.7	14.2	65	1200	0.5C-1C
ICR16340	3.7	16.8	34	700	0.5C-1C
ICR16500	3.7	16.8	50.2	1000	0.5C-1C
ICR16500	3.7	16.8	50.2	1200	0.5C-1C
ICR16650	3.7	16.3	65.2	1800	0.5C-1C
ICR18350	3.7	18.3	35.2	850	0.5C-1C
ICR18500	3.7	18.3	50.2	1200	0.5C-1C
ICR18500	3.7	18.3	50.2	1400	0.5C-1C
ICR18500	3.7	18.3	50.2	1500	0.5C-1C
ICR18500	3.7	18.3	50.2	1600	0.5C-1C
ICR18500	3.7	18.3	50.2	1900	0.5C-1C
ICR18620	3.7	18.5	62.2	2000	0.5C-1C
ICR18650	3.7	18.5	65.2	1300	0.5C-1C
ICR18650	3.7	18.5	65.2	1500	0.5C-1C
ICR18650	3.7	18.5	65.2	1800	0.5C-1C
ICR18650	3.7	18.5	65.2	2000	0.5C-1C
ICR18650	3.7	18.5	65.2	2200	0.5C-1C
ICR18650	3.7	18.5	65.2	2400	0.5C-1C
ICR18650	3.7	18.5	65.2	2500	0.5C-1C
ICR18650	3.7	18.5	65.2	2600	0.5C-1C
ICR18650	3.7	18.5	65.2	3000	0.5C-1C
ICR18650	3.7	18.5	65.2	3350	0.5C-1C
ICR21700	3.7	21.5	70.2	4200	0.5C-1C
ICR22430	3.7	21.5	43.2	2000	0.5C-1C
ICR22500	3.7	22.3	50.2	2400	0.5C-1C
ICR22650	3.7	22.3	65.2	3000	0.5C-1C
ICR26350	3.7	26.5	35.2	2000	0.5C-1C
ICR26500	3.7	26.3	50.2	3200	0.5C-1C
ICR26650	3.7	26.3	65.2	4500	0.5C-1C
ICR26650	3.7	26.3	65.2	5000	0.5C-1C
ICR32550	3.7	32.5	55.2	5000	0.5C-1C
ICR32600	3.7	32.5	60.5	5500	0.5C-1C
ICR32650	3.7	32.3	65.2	6500	0.5C-1C
ICR34600	3.7	34.3	60.2	7000	0.5C-1C

Lithium Rechargeable Battery Cell

>Cylindrical Lithium ion Battery (5C discharge rate)

Model	Nominal Voltage(V)	Dimension		Capacity(mAh)	Discharge Performance
		Diameter(mm)	Height(mm)		
ICR10180	3.7	10.3	18	80	5C
ICR16310	3.7	16.8	31	550	5C
ICR18650	3.7	18.3	65.2	1500	5C
ICR18650	3.7	18.5	65.2	1900	5C
ICR18650	3.7	18.5	65.2	2000	5C
ICR18650	3.7	18.5	65.2	2200	5C
ICR18650	3.7	18.5	65.2	2500	5C
ICR21700	3.7	21.3	70	4000	5C
ICR22430	3.7	22.3	43.2	1200	5C
ICR26350	3.7	26.3	35.2	1900	5C
ICR26650	3.7	26.3	65.2	4200	5C

>Cylindrical Lithium ion Battery (10C discharge rate)

Model	Nominal Voltage(V)	Dimension		Capacity(mAh)	Discharge Performance
		Diameter(mm)	Height(mm)		
ICR14250	3.7	14.2	25	240	10C
ICR14500	3.7	14.2	50.2	650	10C
ICR14650	3.7	14.2	65.2	900	10C
ICR16340	3.7	16.8	34	600	10C
ICR16500	3.7	16.8	50.2	800	10C
ICR18350	3.7	18.3	65.2	700	10C
ICR18500	3.7	18.3	50.2	1100	10C
ICR18650	3.7	18.3	65.2	1300	10C
ICR18650	3.7	18.3	65.2	1500	10C
ICR18650	3.7	18.5	65.2	2000	10C
ICR18650	3.7	18.5	65.2	2200	10C
ICR21700	3.7	21.5	70.2	3000	10C
ICR22650	3.7	23.5	65.2	2000	10C
ICR26500	3.7	26.3	50.2	2000	10C
ICR26650	3.7	26.5	65.2	3400	10C





> Cylindrical Li-FePO4 Battery

Model	Nominal Voltage(V)	Dimension		Capacity(mAh)	Internal Impedance(mΩ)	Discharge Performance	Weight Approx(g)
		Diameter(mm)	Height(mm)				
IFR10370	3.2	10.3	37	140	<120	0.5C-1C	9
IFR14430	3.2	14	43	400	<115	0.5C-1C	15
IFR14500	3.2	14	50	500	<80	0.5C-1C	17.8
IFR18500	3.2	18	50.2	1000	<80	0.5C-1C	30.4
IFR18650	3.2	18	65	1500	<80	0.5C-1C	41.2
IFR26650	3.2	26	65	3000	<20	0.5C-1C	85

Application For Lithium Rechargeable Battery/Battery Pack

> Application For Lithium Polymer Battery/Battery Pack

▶ Main Features:

- Various compact size, capacity to choose from
- High capacity, low internal resistance, stable performance, high security, special pcm could protect the battery from over-charge and over-discharge
- Long cycle life, no memory effect, ready to charge and discharge.
- Green products in compliance with UL CB CE RoHS REACH and other requirements.



▶ Application

Laptop, digital cameras, Portable DVD, flashlight, electronics shaves, electric toothbrushes, barber scissors, intelligent vacuum cleaner, electric power tools, miner's lamp, GPS, individual equipment power supply, solar lamps and lanterns, wireless mouse ect.



▶ GPS tracker Battery



Model	Cell Size(mm)	Voltage	Capacity	Remarks
LP402035	4.0*20*35	3.7V	230mAh	Customized size and specification are acceptable
LP503035	5.0*30*35	3.7V	500mAh	
LP603450	6.0*34*50	3.7V	1000mAh	

▶ Bluetooth Earphone Battery

Model	Cell Size(mm)	Voltage	Capacity	Remarks
LP401230	4.0*12*30	3.7V	105mAh	Customized size and specification are acceptable
LP402025	4.0*20*25	3.7V	150mAh	
LP503040	5.0*30*40	3.7V	560mAh	



▶ Portable Speaker Battery



Model	Cell Size(mm)	Voltage	Capacity	Remarks
LP402025	4.0*25*35	3.7V	330mAh	Customized size and specification are acceptable
LP103448	10.0*34*48	3.7V	1500mAh	
LP785060	7.8*50*60	3.7V	2500mAh	

▶ Wireless gateway/Medical Equipment/Beauty Equipment Battery



Model	Cell Size(mm)	Voltage	Capacity	Remarks
LP103450	10*34*50	3.7V	1.8AH	103450
LP103450	10*34*50	3.7V	2.0AH	popular size

> Application For Lithium ion Battery/Battery Pack

▶ Main Features

- Multi-function hybrid Inverter, Integrated PV, MPPT charger, DC/ AC converter;
- Intelligent energy management system EMS, 7-inch LCD display system can observe the real-time status;
- Battery module using the best quality batteries: lithium iron phosphate LiNiCoMnO2, advanced BMS battery management system to ensure safe and efficient system;
- Easy to use, easy installation, saving electricity;
- Can be used as an emergency power supply, portable and convenient.

▶ Applications

- Suitable for outdoor electricity demand
- Suitable for emergency reserve electricity demand



▶ Detector Battery



Model	Cell Size(mm)	Voltage	Capacity	Remarks
ICR18650 253P	21*56.3*72	11.1V	5.2AH	Customized size and specification are acceptable
ICR18650 452P	21*75*72	14.8V	4.4AH	

Application For Lithium Rechargeable Battery/Battery Pack

Camera Digital Battery

Model	Cell Size(mm)	Voltage	Capacity	Remarks
ICR16340(RCR123A)	16.8*34	3.7V	700mAh	Customized size and specification are acceptable
ICR18650 2S1P	21*38*69.5	7.4V	3000mAh	
ICR18650 3S1P	21*57*69.5	3.7V	2200mAh	



Electronic Toys Battery

Model	Cell Size(mm)	Voltage	Capacity	Remarks
ICR18650	18.5*65.2	3.7V	2000mAh	Customized size and specification are acceptable
ICR18650 2S1P	21*38*69.5	7.4V	2200mAh	



E-cigarette Battery

Model	Cell Size(mm)	Voltage	Discharge Rate	Capacity
ICR18650	18.5*65.2	3.7V	1C-10C	2.0AH
ICR18650	18.5*65.2	3.7V	1C-10C	2.2AH
ICR18650	18.5*65.2	3.7V	1C-5C	2.5AH
ICR21700	21.5*70.2	3.7V	1C-5C	4.5AH



Cash Machine/InterPhone/POS Terminal Battery

Model	Cell Size(mm)	Voltage	Capacity	Remarks
ICR18650 2S1P	21*38*69.5	7.4V	2.0AH	18650 battery pack different capacity available
ICR18650 2S1P	21*38*69.5	7.4V	2.2AH	
ICR18650 2S1P	21*38*69.5	7.4V	2.6AH	



Application For Lithium Rechargeable Battery/Battery Pack

Electric Tool Battery

Model	Cell Size(mm)	Voltage	Capacity	Application
ICR18650 3S3P	21*56.3*72	11.1V	6AH	Electric drill Remote control electric car rental nail
ICR18500 3S2P	37*55*52mm	11.1V	3.0AH	



Medical Equipment Battery

Model	Cell Size(mm)	Voltage	Capacity	Application
ICR18650 2S1P	21*38*69.5	7.4V	2.0AH	ultrasonic flowmeter
ICR18650 4S2P	21*67*146	14.8V	4.4AH	Mason Machine
ICR18650 3S2P	21*71.8*129.6	11.1V	5.2AH	Ultrasonic flaw detector
ICR18650 4S1P	21*73*69.5	14.8V	2.2AH	Electrocardiograph
ICR18650 3S1P	21*57*69.5	11.1V	2.2AH	Monitor

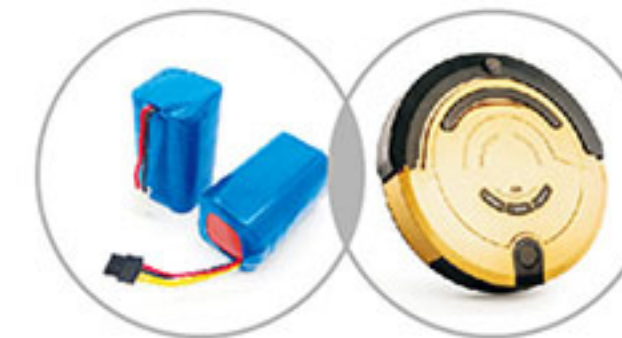


Smart Home Product Battery

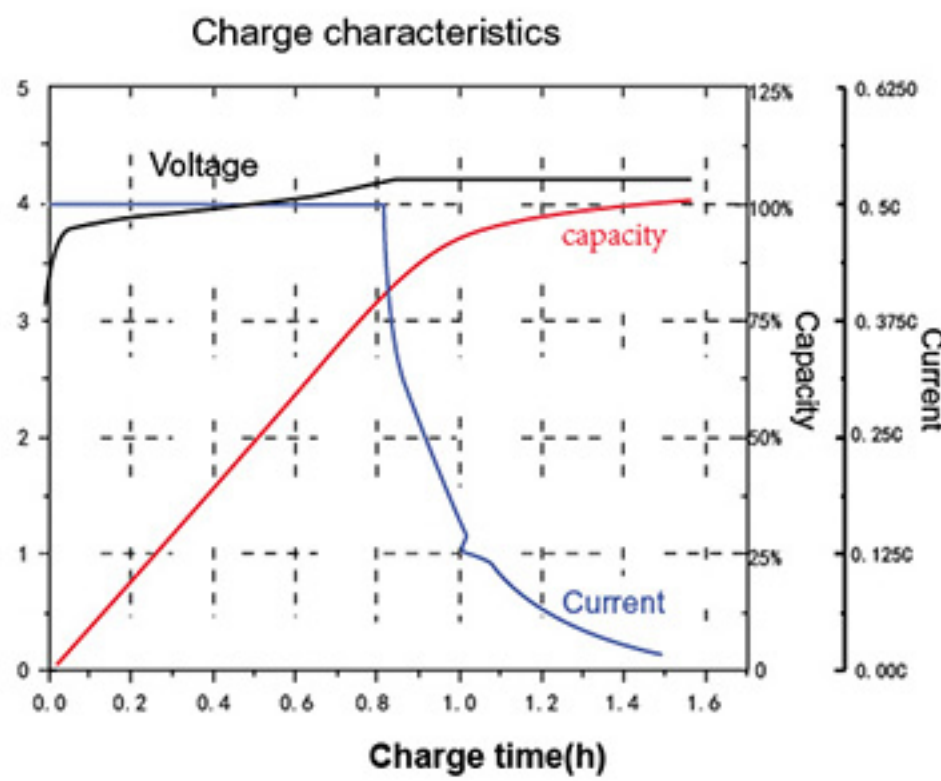
Model	Cell Size(mm)	Voltage	Capacity	Remarks
ICR18650 2S3P	37*55*70mm	7.4V	7.8AH	Customized size and specification are acceptable
ICR18650 4S1P	21*73*69.5mm	14.8V	2.2AH	



14.8v 3000mah li-ion battery pack



Characteristics Of Lithium Battery

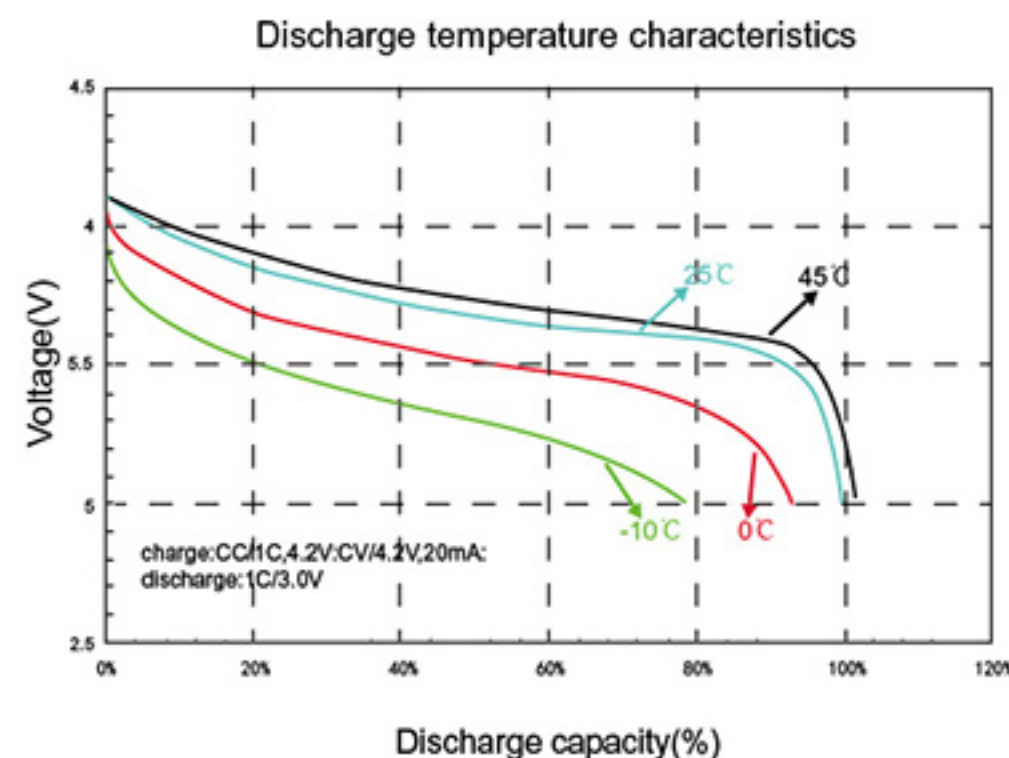
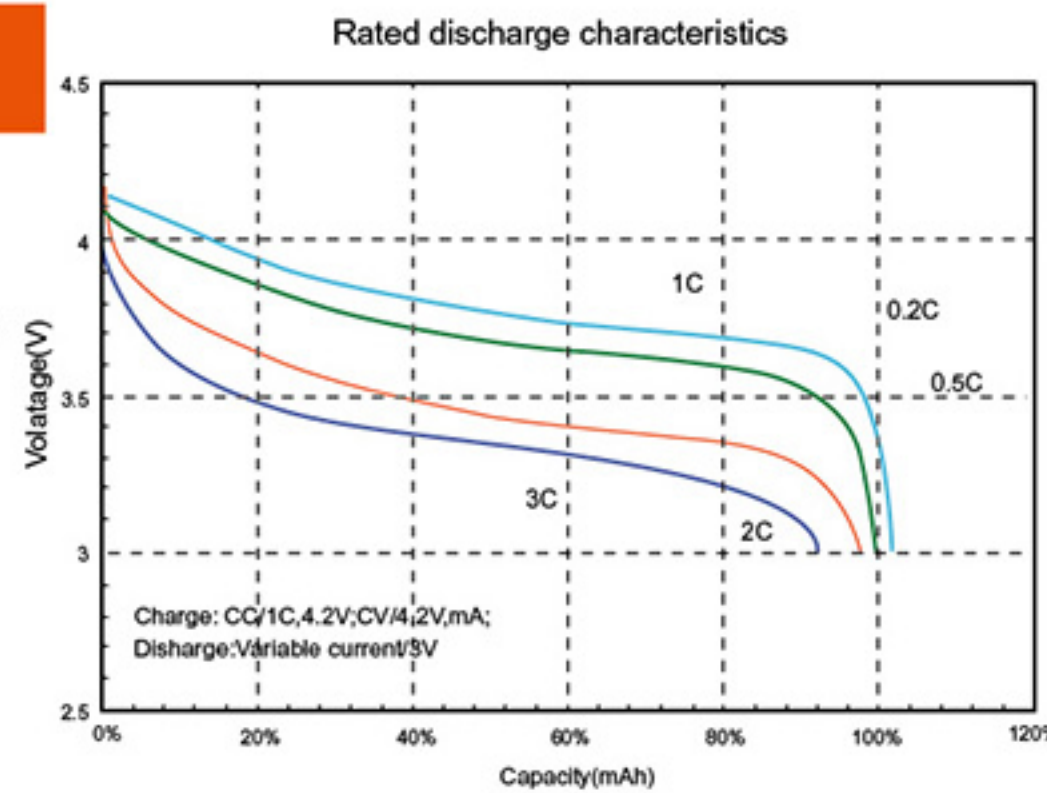


Lithium Battery Charge Notice:

- 1st step : use stable charge current 0.5C ,until voltage to be 4.2V;
- 2nd step: turn to charge with stable voltage 4.2V, until the charge current to be 0.001C;
3. finally fully charged 100% capacity.

Lithium Battery Discharge Notice:

1. IEC standard way: discharge with current 0.2C, end voltage 3.0V, its discharged capacity will be 100% capacity;
2. Energy type Battery can be discharge with 0.5C, 1C, 2C, 3C, but its discharged capacity will be different as the above sheet showed;
3. Recommend when working, its max discharge current can't be over 1C



Lithium Battery Discharge & Temperature Notice:

1. Discharge with 1C, end voltage 3.0V
2. Under different temperature, its discharge capacity is different;
3. recommend discharge under 25 degree
4. Under 45°, the internal material of the battery will be more active, and the discharged capacity will be more, but at this temperature for a long time, it will affect the battery life and will accelerate the service life of the battery (the internal materials will accelerate the aging after being exposed to high temperature for a long time)

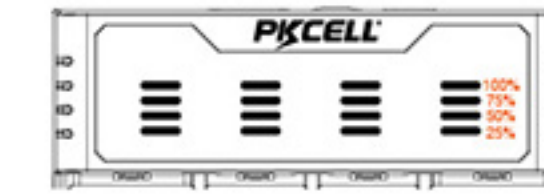
USB Charger For Lithium ion Battery

Our own new mold, has the Appearance Patent

Multi Function Charger PK-834 I

- Micro USB port, Used Globally
- Accurate Battery Power LED Display
- Multiple Protection : Short-Circuit Protection Reverse Connect Protection, Battery Burning Prevention Explosion Prevention
- MCU Auto Management, Extend Batteries' Life
- Activate 0 voltage lithium ion battery
- Fast Charge : Type C 3A
- Power Bank Function, charge your mobile anywhere

3 Colors available : Black, Blue, Orange



Parameter	
Input	5V/2A DC 9V 2A or D12V 1.5V
Charging Mode	Constant Current and Constant Voltage for Li-ion batteries Pulse Constant Current for Ni-MH/Ni-CD batteries
Output	Li-ion Standard : 4.2V 2A x 1, 1A x 2 (fixed on 1st and 4th slot) 0.5A x 4 slots
Li-ion Fast Charge	4.2V 3A x 1, 1.5A x 2 (fixed on 1st and 4th slot) ; 0.75A x 4 slots
Ni-MH/Ni-CD	1.53V 1A x 4 slots
Power Bank Output	5V/2A (Max)
Dimensions	110mm *105mm*39mm
Weight	141g



Compatible with: 3.7V/3.6V Li-ion 26650 22650 21700 20700 18650 18490 18350 17670 14650 14500 10440 16340(RCR123A); 1.2V Ni-MH/Ni-CD AAAA AAA AA A SC C

Li-ion battery Charger PK-824 I

- Micro USB port, Used Globally
- Independent Single Slot Charging System
- Multiple Protection : Short-Circuit Protection Reverse Connect Protection, Battery Burning Prevention Explosion Prevention
- MCU Auto Management, Extend Batteries' Life
- Activate 0 voltage lithium ion battery
- Identify other type battery: when the connected battery is not a lithium battery, the charger doesn't charge, the Red Indicator flashes
- Power Bank Function, charge your mobile anywhere

3 Colors available : Black, Blue, Orange



Parameter	
Input	DC 5V/2A
Output	4.2V 1A*2 (1st slot and 4th slot)
Charging Mode	Constant Current, Constant Voltage
Charging Indicators	Red : Charging, Green: Power on or fully Charged
Power Bank Output	5V/2A (Max)
Dimensions	110mm* 105mm*39
Weight	133g



Compatible with: 3.7V/3.6V Li-ion 26650 22650 21700 20700 18650 18490 18350 17670 14650 14500 10440 16340(RCR123A)

Li-ion battery Charger PK-822 I

- Micro USB port, Used Globally
- Independent Single Slot Charging System
- Multiple Protection : Short-Circuit Protection Reverse Connect Protection, Battery Burning Prevention Explosion Prevention
- MCU Auto Management, Extend Batteries' Life
- Activate 0 voltage lithium ion battery
- Identify other type battery: when the connected battery is not a lithium battery, the charger doesn't charge, the Red Indicator flashes
- Power Bank Function, charge your mobile anywhere

3 Colors available : Black, Blue, Orange



Parameter	
Input	DC 5V/2A
Output	4.2V 1A*2
Charging Mode	Constant Current, Constant Voltage
Charging Indicators	Red : Charging , Green: Power on or fully Charged
Power Bank Output	5V/2A (Max)
Dimensions	110mm* 60mm*39
Weight	72g



Compatible with: 3.7V/3.6V Li-ion 26650 22650 21700 20700 18650 18490 18350 17670 14650 14500 10440 16340(RCR123A)